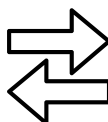
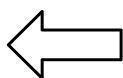




# KIKWALL CONTROLS



Two-way  
protocol

Two-way  
protocol

Radio control

KIKWALL 1 CANAL | KIKWALL 15 CHANNELS

# KIKWALL CONTROLS

*KIK Wall 1 and KIK Wall 15 are powerful remote controls for controlling motors for curtains, blinds or awnings. With a range of up to 200 metres outdoors and 35 metres indoors. KIK Wall 1 focuses on one channel for a single device, while KIK Wall 15 expands the versatility to control up to 15 devices. It stands out for its ability to limit the number of channels, with a design that simulates a wall switch.*

## REFERENCES



**KIKWALL1** | 90.003.101



**KIKWALL15** | 90.003.115

Control for bidirectional and unidirectional motors.

Radio frequency 433.92 Mhz.

Includes trim for wall mounting.

It has channel limitation.

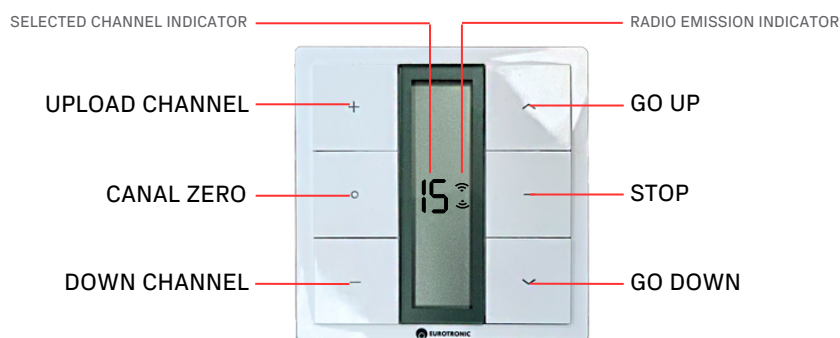
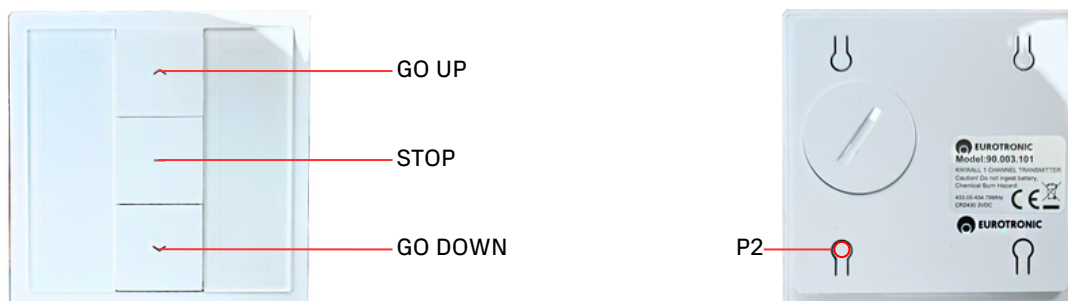
It has one channel (ZERO) to activate all devices simultaneously.

Measurements 86 x 86 mm.

## TECHNICAL CHARACTERISTICS

Name	No.Channels	Feeding	Battery Type	Frequency	Temperature	Measures
KIKWALL1	1	3V	Litio CR2450	433.92 Mhz	-20 a 70° C	86 x 86 mm
KIKWALL15	15	3V	Litio CR2450	433.92 Mhz	-20 a 70° C	86 x 86 mm

## DESCRIPTION OF BUTTONS AND SCREEN DISPLAYS



## INSTRUCTIONS:

### 1. PROTOCOL CHANGE (UNIDIRECTIONAL / BIDIRECTIONAL)



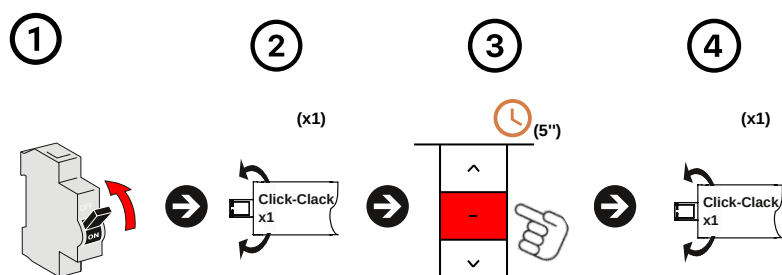
#### Procedure:

---

1. Remove the battery from the remote control
  2. Press and hold the P2 button
  3. While holding down the P2 button on the remote, replace the battery in its place.
- KIKWALL15: The remote will confirm one-way (1) or two-way (2) mode on the screen.
  - KIKWALL1: The LED indicator on the remote will flash once (unidirectional) or twice (bidirectional).

## 2. LINK AS FIRST CONTROLLER

### Two-way mode:

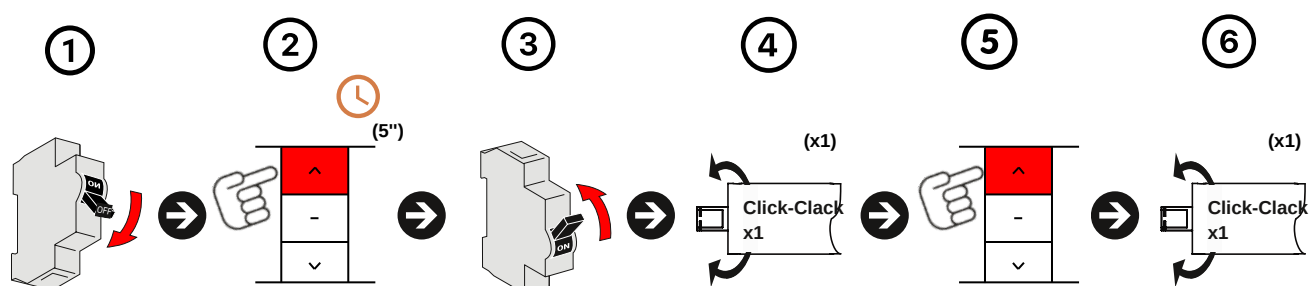


### Procedure:

---

1. Turn on the power.
2. The motor will make a "CLICK-CLACK" sound (x1).
3. Press (STOP) on the remote control to record for five seconds.
4. The motor will make a "CLICK-CLACK" sound (x1).

### One-way mode:

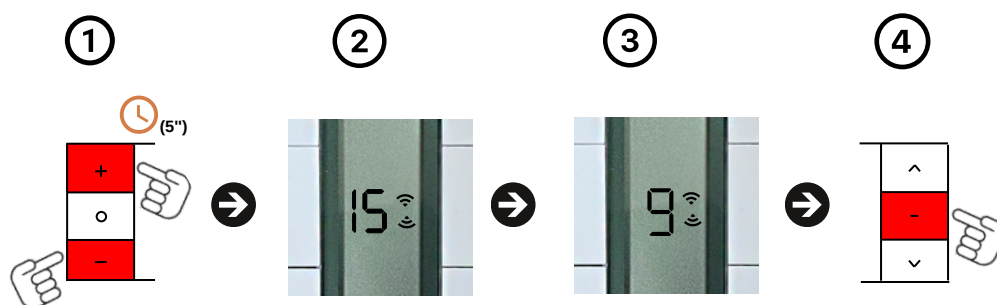


### Procedure:

---

1. Turn off the power.
2. Press the (UP) button for five seconds (5") and without releasing the up button we will give power.
3. The motor will make a beep (x1) and a "CLICK-CLACK" (x1).
4. We will press the (UPLOAD) button again to confirm.
5. The motor will make a "CLICK-CLACK" sound (x1).
6. The transmitter will be linked.

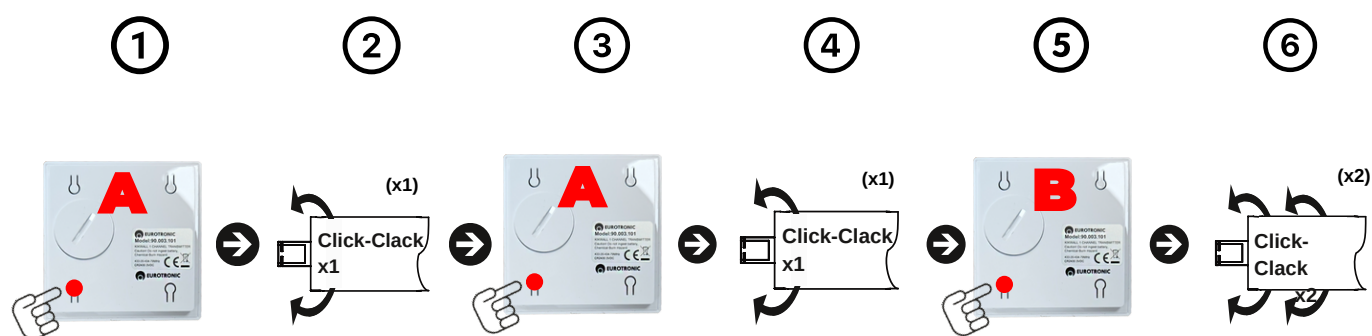
### 3. LIMIT NUMBER OF CHANNELS



#### Procedure:

1. Press the (PLUS and MINUS) buttons for five seconds (5").
2. The number 15 will appear on the screen.
3. Choose the number of channels to use.
4. Press the (STOP) button to confirm.

### 4. MAKE A COPY OF THE MAIN COMMAND



#### Procedure:

1. Press the button (P2) located behind the already linked transmitter (A).
2. The green LED will flash.
3. We will press the button (P2) of the same transmitter (A) again.
4. The green LED will flash.
5. Then press the (P2) button on the new transmitter (B) to confirm.
6. The green LED will flash 5 times.



[www.eurotronic-europe.com](http://www.eurotronic-europe.com)

C/Pica d'Estats, 108-118 Poligono Industrial Sant Isidre 08272 Sant  
Fruitós de Bages (Barcelona) SPAIN

[pedidos@eurotronic-europe.com](mailto:pedidos@eurotronic-europe.com) Tel: +34 932 420 108